

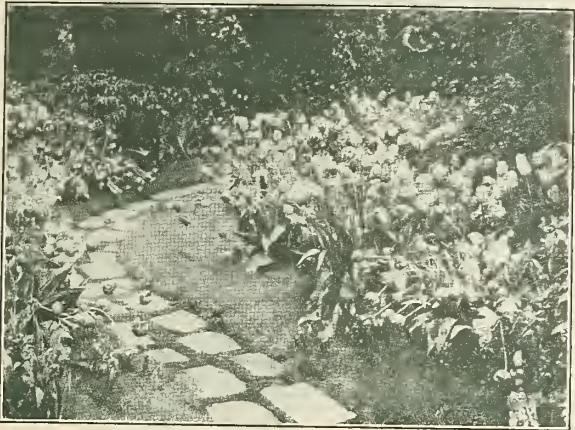
Historic, Archive Document

Do not assume content reflects current scientific knowledge, policies, or practices.

62,63



From the FIELDS of HOLLAND—



—to the GARDENS of AMERICA

Buxton White Seed Co.

The Live Seed House Elizabeth City, N.C.



Special Advance Offer of Dutch Bulbs



Library, Dept. of Agr., Washington, D. C.

Gladden Your Garden

and glorify your home with blooms from our imported Dutch bulbs. At small cost and with very little effort you can fill your house with color and fragrance from Christmas to Easter or you can shower your garden with loveliness when Spring drifts in.

Only a love of flowers is needed to grow these bulbs successfully. You can grow more beautiful flowers for a few cents than you can buy for dollars at a retail shop. Moreover, yours will be the keen delight of watching their every stage of development—from the peeping green shoot to their blooming splendor.

Order NOW! Save Money and Pay Later!

If you place your order not later than July 10th, you will gain this alluring reward for promptness. By adding your order to our own large imports we can get for you the advantage of bed rock prices for the very cream of the Holland bulb crop.

The finest, largest and soundest of the Tulip, Hyacinth, Narcissus and Crocus Bulbs grown in Holland are obtained only by buying in advance of the harvest, so they can be selected out of the general run of the bulbs when dug and packed for shipment. A careful perusal and comparison of prices will convince you that our prices are as low as can possibly be made, commensurate with highest quality. If you are not entirely satisfied with both price and quality, we ask that you return the bulbs, transportation collect.

WE ASK THAT YOU PLACE YOUR ORDER BY JULY 10 and enjoy the saving offered by prices in this advance folder. We will have to pay higher prices on later contracts. It will be necessary for us to name increased prices in our Fall Catalog. Don't wait until July 10. Place your order NOW. Pay when they are delivered in the Fall, or you may deduct a CASH DISCOUNT OF 5% if you send remittance with your order. Postage extra, if by mail. Send your order as soon as you receive this list.



SPECIAL NOTICE!

LAST CHANCE TO IMPORT HOLLAND NARCISSI

The U. S. Government has decreed that NARCISSI or DAFFODILS, along with some other miscellaneous bulbs, will not be allowed entry into our country after December 31, 1925.

Ninety-five per cent of these charming spring-flowering bulbs are now imported from Holland. This is THE LAST SEASON you will be able to secure these bulbs at a reasonable price or of dependable quality for a long time to come. We urge our patrons to order this fine material now for delivery in October to flower next Spring and for many years thereafter in even greater profusion. Use as many as possible this year to assure your garden being well supplied for the future. See our Special Bargain Offer of Spring Glory Narcissus Collection. Do not delay; order now; pay later, when bulbs are received and approved.

Buxton White Seed Co.

The Live Seed House



Elizabeth City, N.C.

Special Advance Import Offer for 1925 on Dutch Bulbs — Buxton White Seed Company, Elizabeth City, N. C.

HYACINTHS

(READY IN OCTOBER)

The Hyacinth is so well and favorably known that it is unnecessary to give any detailed description of its broad upright spike or truss thickly set with bell shaped flowers of beautiful wax-like texture. It succeeds well in either the house or garden, adorning both with varied colors and delicious fragrance of its showy flowers. Its culture is very simple, failure being almost impossible.

Top Size Exhibition

Comparatively few bulbs of this quality come into this country. They are the very finest, extra large, solid "Mother Bulbs," and should not be confused with those often sold as "Exhibition Size," which the Hollanders consider a second size. To all who wish the finest blooms we recommend these exhibition bulbs.

Our list follows—each one is a gem—no poor or indifferent ones—all large bulbs:

GERTRUDE—Rosy pink, large compact spike. A first-class variety for forcing, and being of the erect habit it is very useful for bedding.

LADY DERBY—Vivid pink, fine spike of large waxy bells. Forces easily. One of the finest pink Hyacinths.

LA VICTOIRE—Brilliant red, large, well-shaped spike, splendid flower. Forces easily and early. An exhibition variety.

L'INNOCENCE—Pure white, well formed spike. Early and excellent for forcing, also recommended for bedding.

GRAND MAITRE—Deep porcelain blue, broad, well formed spike. Recommended for forcing and bedding.

QUEEN OF THE BLUES—Light blue with silvery appearance, large splendid flower. An exhibition variety of great merit. Excellent for forcing and bedding.

LORD BALFOUR—Purple lilac, large spike and bells. Forces early and easily.

YELLOW HAMMER—Pure golden yellow, fine broad spike. One of the best yellows for forcing and bedding.

Price of Top-Size Bulbs: 25c each; \$2.50 per doz.; \$20.00 per 100.

By Parcel Post, add 10c per doz.; 50c per 100.

First Size

These bulbs are in every way strictly first class and will give perfect satisfaction for either forcing or bedding. This size is often sold as "Exhibition Bulbs," but is slightly smaller than the Exhibition or Top-Size listed above. Varieties same as described above.

Price of First-Size Bulbs: 20c each; \$2.00 per doz.; \$16.00 per 100.

By Parcel Post, add 10c per doz., 50c per 100.

Bedding Hyacinths By Color

Our bedding Hyacinths are unexcelled for use where an effective display is wanted in the open air and are of such superior quality as to be entirely satisfactory to florists and others who use large quantities for forcing. They comprise the finest shades of color and must not be confused with cheap mixtures sometimes offered for outdoor planting. Offered in the following separate colors:

PURE WHITE	BRIGHT ROSE	LIGHT BLUE
BLUSH WHITE	DEEP ROSE	DARK BLUE
LIGHT PINK	PURPLE	YELLOW

Prices: 12c each, \$1.25 per doz., \$10.00 per 100.

By Parcel Post, add 10c per doz., 50c per 100.

Early French Roman Hyacinths

Roman Hyacinths excel all other varieties for forcing in the house, being among the most easily cultivated and most satisfactory of flowering bulbs. The white variety blooms earliest and should be forced slowly. The others require about two weeks longer in forcing and make a most graceful, fragrant and early flower for outdoor planting. Offered in the following separate colors:

PINK	WHITE	BLUE
------	-------	------

Prices: 15c each; \$1.50 per doz.; \$12.00 per 100.

By Parcel Post, add 5c per doz., 25c per 100.

NOTE—The supply of Hyacinth Bulbs in Holland this season is less than the demand, due to the unprecedented demand from European countries, such as Norway, Sweden, Germany and Denmark. This has resulted in greatly increased prices. During the war, owing to the lack of European demand, Dutch Hyacinth culture was greatly reduced. It takes a rather long time to produce a first quality Hyacinth bulb, and now that these markets have again opened, the result is that Hyacinths are now at a premium. In order to get the same high quality and size that we have offered in the past, we were obliged to raise our prices.

ORDER NOW



SAVE MONEY

NARCISSI AND DAFFODILS

(READY IN OCTOBER)

By Parcel Post, add 10c per doz., 50c per 100.

The graceful and charming Narcissus has been developed by its many enthusiasts until the sorts offered are almost without number. We offer the most popular varieties. Our stock is of the largest, selected "Mother Bulbs" ("double nose"), which are those having reached maturity and about to break up into smaller bulbs. These will send up several flower-stems, whereas the ordinary bulbs seldom produce more than one stalk. We would advise all those interested in Narcissus to plant heavily of them this year, bearing in mind that they will be barred from importation by quarantine after 1925.



Large Single Trumpet Daffodils

	Each	Doz.	100
Emperor—Deep yellow, large flower	\$.12	\$1.00	\$7.50
Empress—Bicolor; trumpet yellow, perianth white	.12	1.00	7.50
Glory of Leiden—Deepest golden yellow, giant	.12	1.00	7.50
Mme. de Graaff—Pure white petals, largest	.12	1.00	7.50

Double Narcissi

Von Sion—Golden yellow, double trumpet Daffodil	\$.10	\$.90	\$7.00
Orange Phoenix—Double white, orange center	.08	.80	6.00

Single Medium Trumpet Narcissi

Gloria Mundi—Yellow perianth, orange-scarlet crown	\$.12	\$1.00	\$7.50
Sir Watkin—Perianth sulphur, cup bright orange, giant of its class	.12	1.00	7.50

Poet's Narcissi

Poeticus Ornatus—White perianth, yellow cup edged scarlet, early, fragrant	\$.07	\$.70	\$5.00
----------------------------------------------------------------------------	-------	-------	--------

B. W. QUALITY BULBS MAKE SATISFIED CUSTOMERS

"The \$15.00 order of bulbs that I got from you last fall has proved very satisfactory. Among the lot of Narcissi there were some unlike anything I have seen before or found in any other catalog."

MRS. J. L. PHILLIPS, Washington, N. C.

"I just opened the box and want to say that the Bulbs are beautiful, so nice and fresh—the largest Daffodils I ever saw. I am sure they will be very fine in bloom. I thank you for taking so much pains in selecting and packing."

MRS. ROBERT BROCKETT, High Point, N. C.

SPECIAL OFFER

With every order for B. W. Quality Bulbs amounting to as much as \$10, we include free a copy of "Dutch Bulbs, Their History and Treatment." This book, printed at Haarlem, Holland, is written by a Dutch bulb specialist and covers a complete store of information for amateur or professional. Handsomely illustrated with numerous full page color plates. Price of book alone, \$1.00 prepaid.

Polyanthus Narcissi

(Especially Valuable for Indoor Forcing)

The great desire of those who buy bulbs for winter blooming indoors is to have a generous supply in full bloom during the Christmas holidays. Many disappointments are due to the effort to force such bulbs as Dutch Hyacinths, Tulips and Daffodils into too sudden bloom.

Below is listed the extra early blooming bulbs which can be depended upon for quick forcing in the house (except Early French Roman Hyacinths, listed under Hyacinths). All of these bulbs, except Chinese Lilies, are grown in Southern France, where they mature early, and usually reach America fully a month ahead of the Holland bulbs.

Anybody can grow them successfully, by carefully following the instructions sent with each order, and have a continuous supply of beautiful, fragrant flowers in the home from December to March.

	Each	Doz.	100
Giant Paper White—Grandiflora; selected	\$.05	\$.50	\$4.00
Mammoth Bulbs	.07	.75	5.50
Grand Soliel d'Or (Yellow Paper White)—Yellow with orange cup, strong	.12	1.00	7.50
Chinese Sacred Lily (Oriental Narcissus)—White with yellow cup			
Large Bulbs	.15	1.50	
Mammoth Bulbs	.20	2.00	

CROCUSES

(READY IN OCTOBER)

By Parcel Post, add 5c per dozen, 20c per 100

Among the earliest to bloom in the spring is this beautiful little flower, its funnel-shaped flowers borne erect from grass-like leaves. Most showy when planted in large beds, but very desirable effect is produced by setting crocuses here and there over the lawn. Crocuses are also easily flowered in the house during winter in pots of soil or shallow bowls of bulb fibre.

	Doz.	100
Albion Striped—Purple, blue and white striped	\$.30	\$2.00
Mont Blanc—Pure white	.30	2.00
Maximilian—Lilac blue, new, large	.30	2.00
Mammoth Yellow—Extra size	.35	2.50
B. W. Quality Mixture—All colors	.25	1.50

"My bed of Bartigon Tulips was gorgeous this spring, admired by everybody who saw them. The Tulips were brilliant, very large and handsome on tall straight stems. I was naturally very greatly pleased."

MRS. C. C. DAWSON, Cramerton, N. C.

FREE SERVICE

With all orders for B. W. Quality Bulbs we include free Cultural Leaflets, giving complete and detailed directions for the planting and culture of bulbous plants. This is in keeping with our policy to render such service to our customers as to enable them to secure the maximum results from planting. Each class of bulbs is treated in a separate leaflet. You should get acquainted with our service.

TULIPS

(READY IN OCTOBER)

By Parcel Post, add 5c per dozen, 25c per 100.

The great variety of dazzling colors, in every conceivable combination, makes the Tulip the most popular of the spring-flowering bulbs. By planting bulbs of the different classes, a display of bloom may be had for several weeks, beginning first with the early-flowering section and ending with the Darwins.

Single Early Tulips

The Single Early Tulip is one of the most attractive and popular spring-blooming flowers for garden borders and for bedding. Most of those named below are equally valuable for pot culture indoors.

	Each	Doz.	100
Artus—Scarlet, fine shaped flower	\$.07	\$.65	\$4.50
Belle Alliance—Scarlet, sweet scent; forcer	.08	.70	5.00
Chrysolora—Golden yellow, good bedder	.07	.60	4.00
Cottage Maid—White bordered pink, fine bedder	.08	.70	5.00
Crimson Brilliant—Brilliant red, fine forcer	.07	.60	4.00
Kiezerkroon—Bright red bordered yellow; fine bedder or forcer	.08	.70	5.00
La Reine—White, sometimes blush pink; forcer	.07	.65	4.50
Thomas Moore—Apricot orange, fine early forcer	.07	.65	4.50
White Hawk—Pure white, egg shaped, late	.08	.75	5.50
Wouwerman—Purple violet, large, fine bedder	.08	.70	5.00
Yellow Prince—Rich yellow, sweet scented, forcer	.07	.60	4.00
B. W. Quality Mixture—Our own mixture of named varieties		.50	3.25

Double Early Tulips

Double Early Tulips are used extensively for forcing, but are equally valuable for bedding purposes. They remain in bloom longer than do the single sorts, but do not make quite as fine show.

	Each	Doz.	100
Boule de Nieve—Pure white, large	\$.08	\$.75	\$5.50
Murillo—Blush white; best double forcer	.06	.55	4.00
Rubra Maxima—Deep red, forcer or bedder	.07	.60	4.50
Tearose—Saffron yellow, excellent forcer	.07	.60	4.50
Vuurbaak—Bright vermilion, best double red forcer	.09	.90	6.50
B. W. Quality Mixture—Superior mixture from named varieties		.55	3.50

Giant Darwin Tulips

Darwin Tulips, known as "The Tulip Aristocrats," belong to the late-flowering class; they are distinct in style of growth, the large, brilliantly colored flowers being borne on long, straight, stout stems. For massing, bedding, or for border planting, the Darwins are unexcelled. They are also very desirable for pot culture, but should be forced slowly.

	Each	Doz.	100
Baronne de la Tonnaye—Bright rose pink, light edge	\$.07	\$.60	\$4.00
Bartigon—Dazzling scarlet, strong, good forcer	.09	.85	6.25
Clara Butt—Soft salmon pink, extra fine	.07	.55	4.00
Dream—Pale heliotrope, shaded violet	.07	.60	4.50
Ergusta—Light violet, good forcer	.08	.75	5.50
Inglescombe Yellow (Cottage)—Canary yellow	.07	.60	4.50
La Candeur (White Queen)—White tinged blush	.08	.70	5.00
La Tulipe Noire—Nearly black, large, rarity	.08	.75	5.50
Madame Krelage—Bright pink, light edge, fine	.08	.75	5.50
Painted Lady—Creamy white	.07	.65	4.50
Pride of Haarlem—Carmine pink, extra large	.07	.60	4.50
William Pitt—Glowing dark crimson, extra fine	.10	.90	7.00
B. W. Quality Mixture—All colors		.55	3.50

Dutch Breeder Tulips

The Breeder Tulip makes a distinct and worthy contribution to any flower garden, having become quite prominent of late years. They are similar to the Darwins, the flowers are large and run principally in purple, bronze and brown shades. Not suitable for forcing in pots.

	Each	Doz.	100
B. W. Quality Mixture—From best varieties	\$.07	\$.60	\$4.00

Old English Cottage Tulips

(May-Flowering Tulips)

No other spring flowering bulb can approach Cottage Tulips for brilliancy, beauty and usefulness. They are ideal for massing, planting in beds or for the perennial border.

	Each	Doz.	100
B. W. Quality Mixture—Choice varieties	\$.07	\$.55	\$3.50



Special Bargains in Bulb Collections

Coax Spring into your 1926 garden with any or all of the attractively low-priced collections here offered. When Spring comes, her path should be lined with Daffodils, Tulips and Hyacinths. Here is an economical and easy opportunity.

Spring Glory Narcissus Collection

1 doz. Emperor Daffodil	\$1.00
1 doz. Empress Daffodil	1.00
1 doz. Glory of Leiden Daffodil	1.00
1 doz. Mme. de Graaff Daffodil	1.00
1 doz. Von Sion Double Daffodil	.90
1 doz. Orange Phoenix, Double Narcissus	.80
1 doz. Gloria Mundi, Medium Trumpet Narcissus	1.00
1 doz. Sir Watkin, Medium Trumpet Narcissus	1.00
1 doz. Poeticus Ornatus, Poet's Narcissus	.70
1 copy "Dutch Bulbs, Their History and Treatment"	1.00
Value	\$9.40

Special price: 108 Narcissi and Bulb Book for only **\$7.50**

Sunrise Tulip Collection

50 Single Early Tulips, assorted varieties	\$2.25
50 Double Early Tulips, assorted	2.50
50 Darwin Early Tulips, assorted	2.25
50 Breeder Tulips, mixed	2.00
50 Cottage Tulips, mixed	1.75
1 copy "Dutch Bulbs, Their History and Treatment"	1.00
Value	\$11.75

Special price: 250 Tulips and Bulb Book for only **\$9.50**

"I am thoroughly pleased with the bulbs I got from you last fall. I never saw such handsome Tulips and Daffodils, far beyond my expectations, and they certainly have been a joy to me this spring."

MRS. JAMES E. McGEE, Rosemary, N. C.

Rainbow Collection of Dutch Bulbs

25 Hyacinths, Exhibition assorted varieties	\$5.00
50 Single Early Tulips, assorted	2.25
50 Darwin Tulips, assorted	2.25
50 Breeder Tulips, mixed	2.00
50 Cottage Tulips, mixed	1.75
25 Narcissi, mixed	2.00
100 Crocus, Named varieties	2.25
1 copy "Dutch Bulbs, Their History and Treatment"	1.00
Value	\$18.50

Special price: 350 Bulbs and Bulb Book for only **\$15.50**

"I was delighted with your Bulbs last year, and am looking forward with much pleasure to these."

MRS. HENRY F. LONG, Statesville, N. C.

MISCELLANEOUS BULBS AND ROOTS

In addition to the Dutch Bulbs, we also offer at this time special money-saving prices on a number of other bulbs and roots from many parts of the world. Early orders enable us to buy more intelligently and we can pass this saving on to you, if you will place your order before July 10th.

FREESIAS

These are most fragrant and can be easily forced, being adapted to house culture only. The flowers last a long time and are exceptionally valuable for cutting. For succession of bloom plant at intervals of about two weeks.



	Each	Doz.	100
Purity—Purest white; best quality	\$.05	\$.50	\$3.00
Rainbow—New colored Freesias in strong favor	.06	.60	4.00

HARDY LILIES

For color, fragrance, beauty and variety of form, nothing can equal these grand flowers. Whether grown in pots or grouped in the perennial border, where their hardiness makes them so desirable, they are always an object of beauty, and by proper selection can furnish continuous bloom from early summer until fall. Ready in November.



IRIS, FLEUR-DE-LIS

Invaluable for the herbaceous border. On account of their hardiness and easy culture, and for their lavish wealth of blossoms that crown their numerous stems they are greatly prized. Ready in September.



	Each	Doz.
Dalmatica — Lavender, very large and extra fine	\$.20	\$2.00
Florentina Alba—Pure white, faintly flushed blue, pleasing fragrance, early	.20	2.00
Queen of May—Rosy pink, tinted with violet, lovely shade	.20	2.00
Mixed	—	1.50

(By Parcel Post, add 5c each, 25c per doz.)

AMARYLLIS

The most successful indoor plant for the amateur. Their immense flowers, richness of color and regal habits are simply incomparable.

	Each	Doz.
Johnsoni (Bermuda Spice Lily)—Bright red, white, stripe. Early, abundant, robust	\$.35	\$3.50

	Each	Doz.
Auratum (Gold Banded Lily of Japan)—White dotted crimson, gold band through each petal	\$.35	\$3.50
Candidum (Madonna Lily)—Snow white, large, fragrant. June	.30	3.00
Funkia (Day Lily)—Showy, fragrant, white flowers. August	.25	2.50
Regale (Myriophyllum)—New, rare lily from China; white, shaded pink, canary-yellow center. Early July	.40	4.00
Speciosum Rubrum (Lanced-Leaved Lily)—White spotted and rayed rosy-red. August	.35	3.50
Superbum (Turk's Cap Lily)—Bright orange, spotted purple. July	.20	2.00
Tigrinum Splendens (Tiger Lily)—Orange spotted purple; very hardy, tall. August	.20	2.00
Lily of the Valley—For outdoor planting. Clumps	.50	5.00

Calla Lily

White (Aethiopica)—Handsome house plant	\$.25	\$2.50
-----------------------------------------	-------	--------

EXHIBITION PEONIES

Like roses, practically indispensable. The fragrance and delicate tints and shades of their beautiful flowers commend them. They are absolutely hardy and of the easiest culture. Ready in September. Offered as follows:

Double White	Double Red	Double Pink
Price; 40c each; \$4.00 per doz. Mixed, \$3.50 per doz. By Parcel Post, add 5c each, 30c per doz.		

